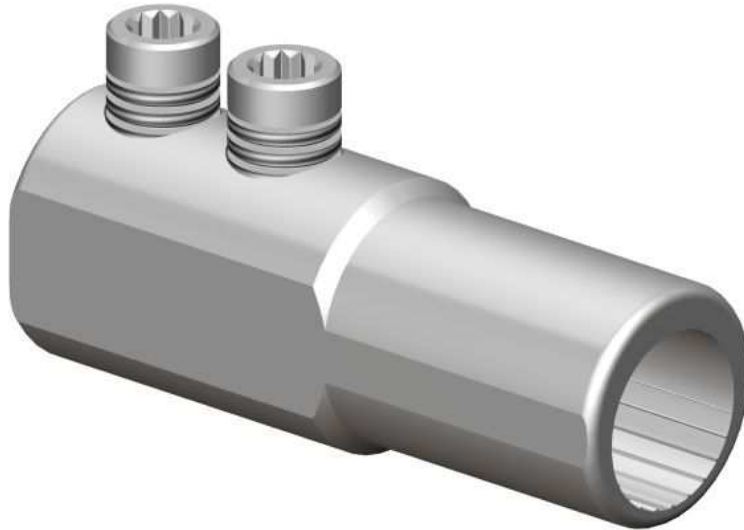


ML5 Connector**Principle Application:**

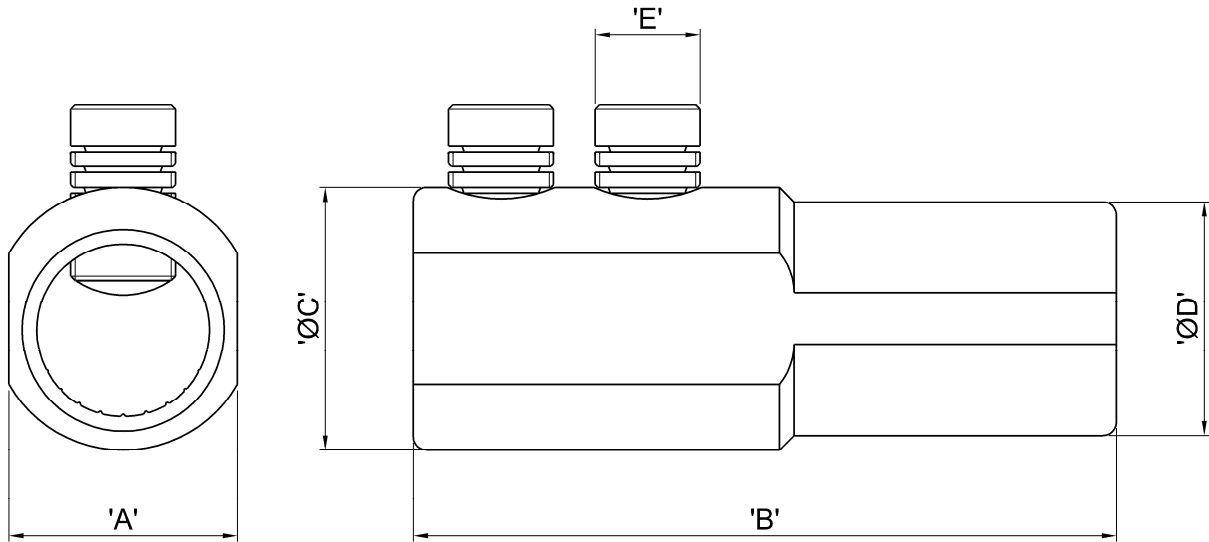
Termination of solid cored conductors.

Range:

Product Reference	Conductor Core C.S.A. (mm ²)	
	min.	max.
ML5	480 (4 x 120)	600 (4 x 150)

ML5 Connector

Physical Dimensions



Connector Reference	Dimensions (mm)				
	'A'	'B'	'ØC'	'ØD'	'E'
SS 35/4	39	120	45	40	M18

Material:

Aluminium Alloy