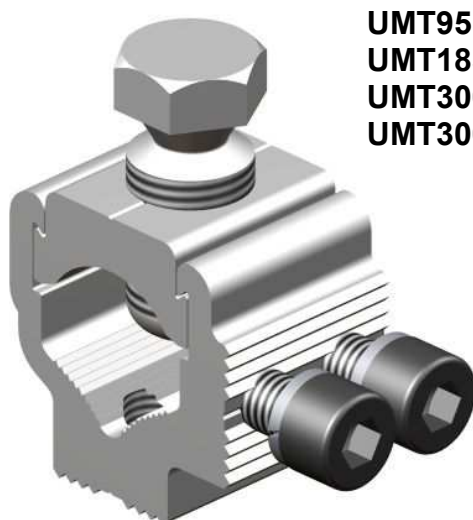
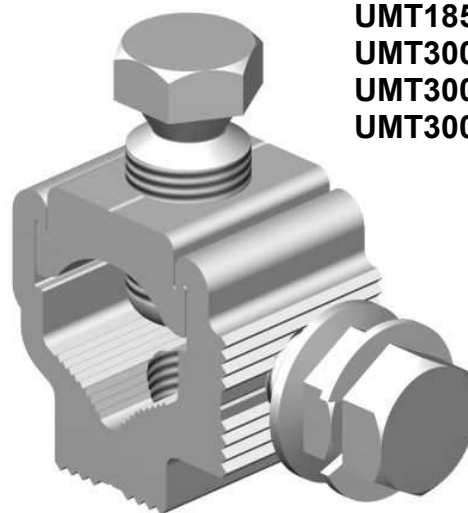


**UMT Connectors**



**UMT95  
UMT185  
UMT300  
UMT300/REN**



**UMT185/UPN  
UMT300/UPN  
UMT300/B  
UMT300/C**

**Principle Application:**

For LV terminations of sector/round, stranded/solid, aluminium/copper conductor cores.

**Range:**

Connector Reference	Core C.S.A. (mm <sup>2</sup> )		Busbar Thickness (mm)
	Min	Max	
UMT95	25	95	6.5 - 8.1
UMT185	35	185	6.5 - 8.1
UMT300	70	300	6.5 - 8.1
UMT185/UPN	35	185	6.5 - 8.1
UMT300/UPN	185	300	6.5 - 8.1
UMT300/B	70	300	6.5 - 8.1
UMT300/C	70	300	4 - 5
UMT300/REN	70	300	12

Note: For jointing other core configurations/sizes please contact Sicame Technical Dept

The **Hepworth UMT** range of universal termination connectors accommodates an extensive range of LV cable styles and sizes.

The connector utilizes the proven shear head direct acting bolts (plated) thereby removing the need for pressure plates.

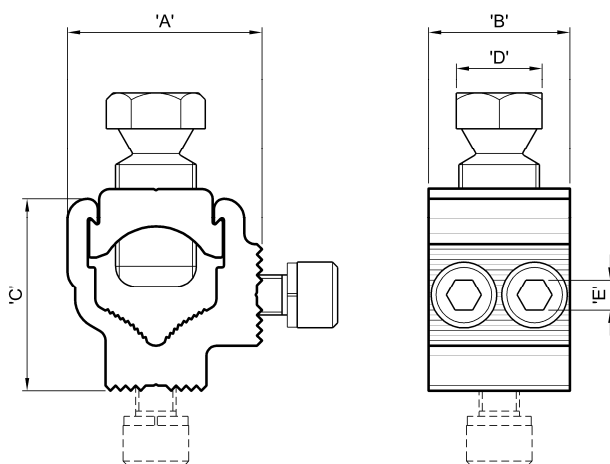
The plated bolts combined with a standard plated yoke section, allow for the jointing of copper conductor cores without the need for the conventional brass gauze.

**UMT Connectors**

**Physical Dimensions:**

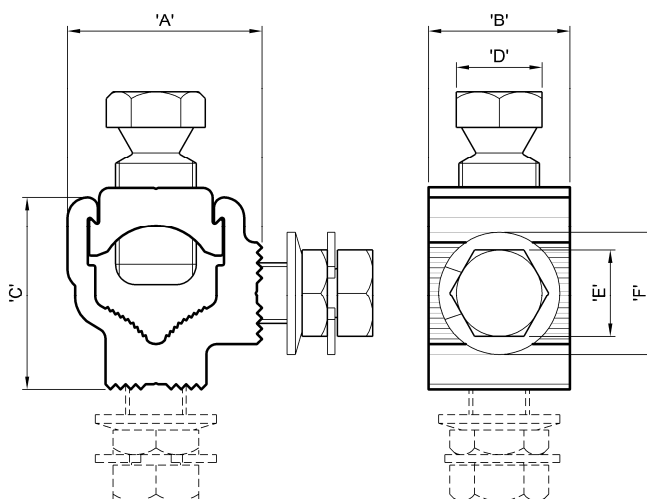
**UMT95  
UMT185  
UMT300  
UMT300/REN**

**Note:** UMT300/REN utilizes a double headed shear screw in the bridge piece.



**UMT185/UPN  
UMT300/UPN  
UMT300/B  
UMT300/C**

**Note:** UMT300/B & UMT300/C utilize a double headed shear screw in the bridge piece.



Connector Reference	Dimensions (mm)					
	'A'	'B'	'C'	'D'	'E'	'F'
UMT95	30.5	28.0	30.5	13 A/F	5 A/F	N/A
UMT185	38.5	30.0	38.0	17 A/F	6 A/F	N/A
UMT300	44.5	30.0	44.5	17 A/F	6 A/F	N/A
UMT185/UPN	38.5	28.0	38.0	17 A/F	17 A/F	Ø24.0
UMT300/UPN	44.5	30.0	44.5	17 A/F	17 A/F	Ø40.0
UMT300/B	44.5	30.0	44.5	17 A/F	17 A/F	Ø40.0
UMT300/C	44.5	30.0	44.5	17 A/F	17 A/F	Ø40.0
UMT300/REN	44.5	30.0	44.5	17 A/F	6 A/F	N/A

**Material:** Aluminium Alloy (Tinned)

**Test Specification:** Designed to meet the requirements of Engineering Recommendation C79 and IEC61238-1.