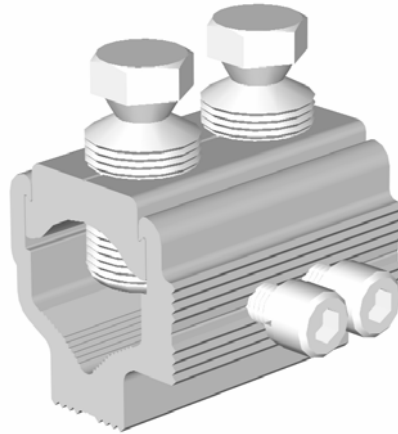


Universal Mains
Termination Connector

MECHANICAL CONNECTORS



UMT95D, UMT185D & UMT300D Connectors



Principle Application

For LV terminations of sector/round, stranded/solid, aluminium/copper conductor cores.

Range

| Connector Reference | Core csa (mm ²) | | Approx Unit Weight (grms) |
|---------------------|-----------------------------|-----|---------------------------|
| | Min | Max | |
| UMT95D | 25 | 95 | |
| UMT185D | 35 | 185 | |
| UMT300D | 70 | 300 | |

Note: For jointing other core configurations/sizes please contact Sicame Technical Dept

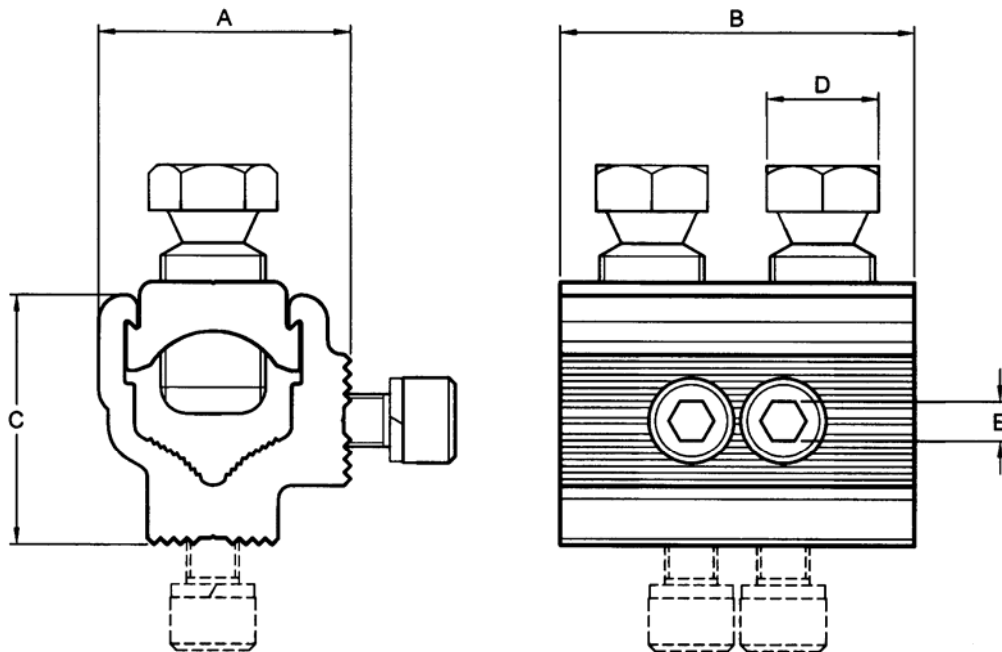
The **Hepworth UMT/D** range of universal termination connectors accommodates an extensive range of LV cable styles and sizes.

The connector utilises the proven shear head direct acting bolts (plated) thereby removing the need for pressure plates.

The plated bolts, combined with a standard plated yoke section, allow for the jointing of copper conductor cores without the need for conventional brass gauze.

**UMT95D, UMT185D & UMT300D
Connectors**

Physical Dimensions



| Connector Reference | Dimensions (mm) | | | | |
|---------------------|-----------------|------|------|--------|-------|
| | A | B | C | D | E |
| UMT95D | 30.5 | 43.0 | 30.5 | 13 A/F | 5 A/F |
| UMT185D | 38.5 | 54.0 | 38.0 | 17 A/F | 6 A/F |
| UMT300D | 44.5 | 60.0 | 44.5 | 17 A/F | 6 A/F |

Material

Aluminium Alloy

Test Specification

Designed to meet the requirements of Engineering Recommendation C79, BS4579 and IEC1238-1.