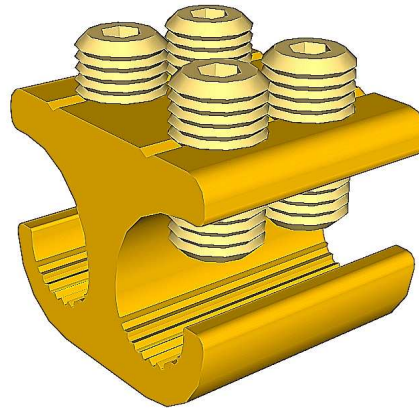


MB21/1 Connector



Principle Application:

Stranded and solid circular conductors.

Range:

Product Reference	Type	Core c.s.a. (mm ²)	
		Min	Max
MB21/1	Branch	4*	35

Note: For jointing other core configurations/sizes please contact Sicame Technical Dept

The **Hepworth MB21/1** mechanical connector is designed for service branch connections on stranded or solid cable. The connector is manufactured in copper alloy for suitability of jointing both copper and aluminium conductor cores.

Secondary Application:

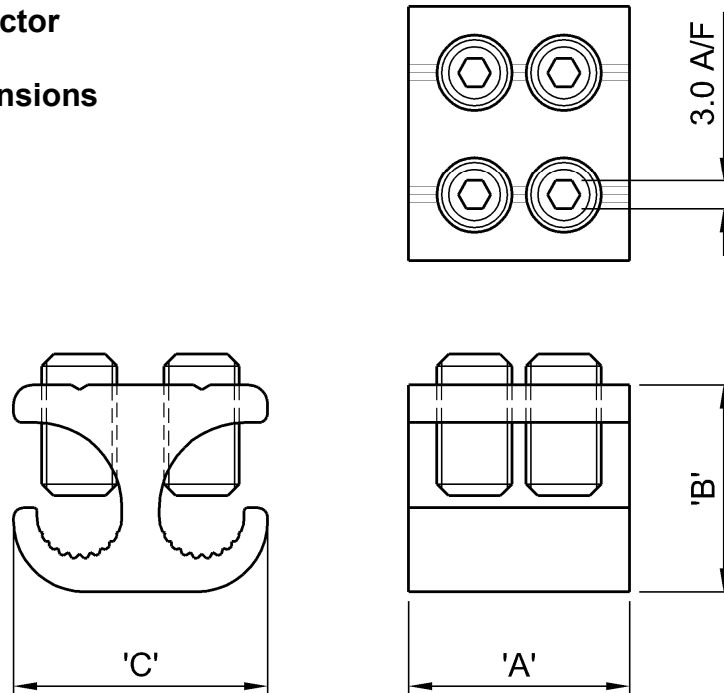
Stranded and solid shaped service conductors.

Product Reference	Type	Core c.s.a. (mm ²)	
		Min	Max
MB21/1	Branch	4*	35

Note: For jointing other core configurations/sizes please contact Sicame Technical Dept

MB21/1 Connector

Physical Dimensions



Connector Reference	Dimensions (mm)		
	'A'	'B'	'C'
MB21/1	23.5	22.0	27.0

Material:

Copper Alloy

Test Specification:

IEC1238-1. Test Report N°: TTR/267 and 275

Fitting Instructions:

1. Cut the cables to length and strip the core insulation equal to the length of the connector +3mm.
2. Thoroughly abrade all conductors to be jointed.
3. Align cores within connector and tighten screws on each side of the connector consecutively, until tight.

Note:

* Conductor cores 4mm² and below should be doubled, and if necessary doubled again, to achieve the necessary cross-sectional area.