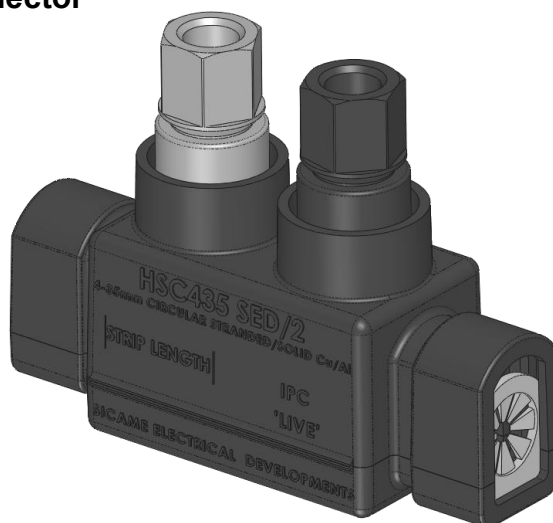


LV Fully Insulated,  
In-Line Service,  
Insulation Piercing  
'Deferred' Connector

## MECHANICAL CONNECTORS



### HSC435 SED/2 Connector



#### Principle Application:

Stranded and solid circular service conductors.

#### Range:

Connector Reference	Core csa (mm <sup>2</sup> )	
	Min	Max
HSC435 SED/2	4	35

Note: For jointing other core configurations/sizes please contact Sicame Technical Dept

The Hepworth '**HSC435 SED/2**' insulation piercing connector has been specifically designed to improve the level of safety during live jointing by eliminating the need to remove core insulation (live end).

This connector facilitates a quick, reliable and **inherently safe** method of connection whilst providing the ability to withstand 'load pick-up'.

This connector is fully torque controlled utilising the latest shear bolt technology to ensure a reliable long term connection.

The use of a connector holding tool is recommended:-



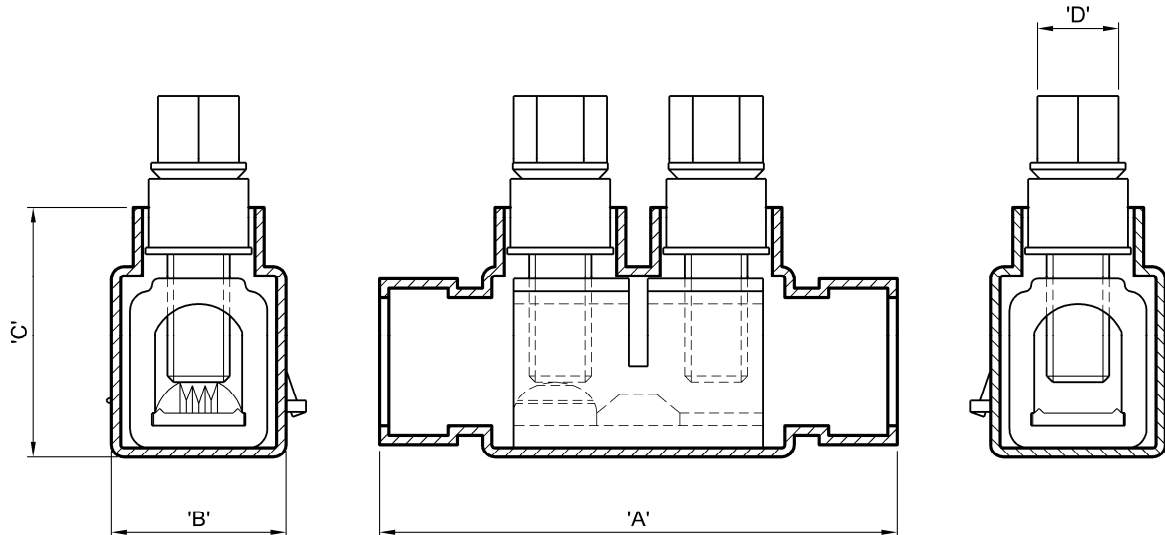
'JTN/8' Insulated Holding Tool

LV Fully Insulated,  
In-Line Service,  
Insulation Piercing  
'Deferred' Connector

## MECHANICAL CONNECTORS

### HSC435 SED/2 Connector

#### Physical Dimensions



Connector Reference	Dimensions (mm)			
	'A'	'B'	'C'	'D'
HSC435 SED/2	83.0	28.0	40.0	13 A/F

#### Material:

**Casing:** Polypropylene  
**Body:** Aluminium Alloy  
**Teeth:** Copper Alloy (Tinned)

#### Test Specification:

Tested to BS EN 61238-1 : 2003.

Type Test Report No. TTR/290-HSC435-4C  
TTR/291-HSC435-A35