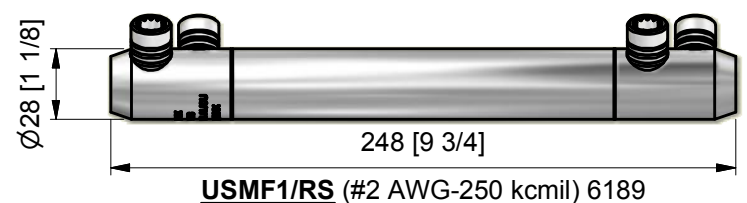
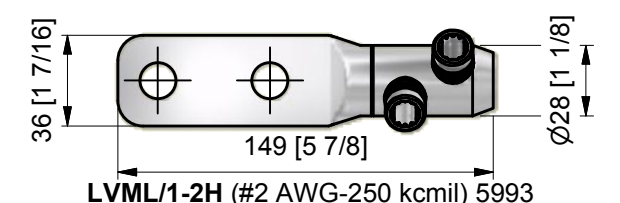


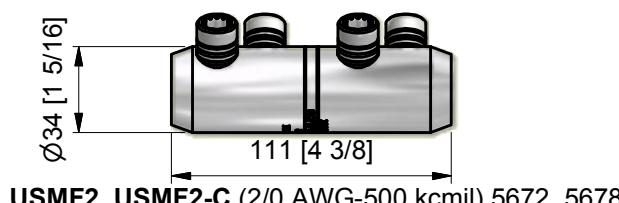
USMF1, USMF1-C (#2 AWG-250 kcmil) 5670, 5676



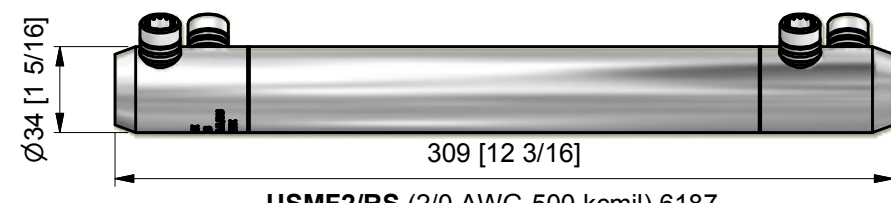
USMF1/RS (#2 AWG-250 kcmil) 6189



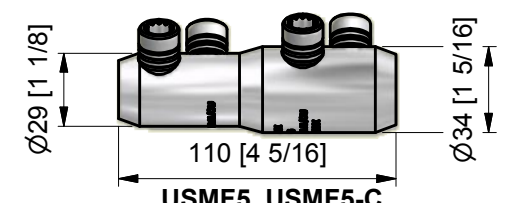
LVML/1-2H (#2 AWG-250 kcmil) 5993



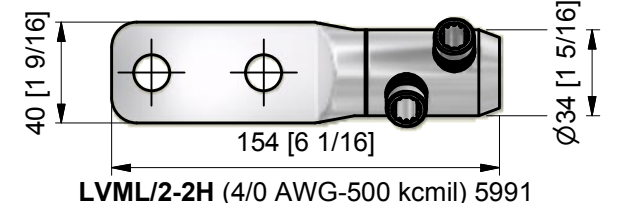
USMF2, USMF2-C (2/0 AWG-500 kcmil) 5672, 5678



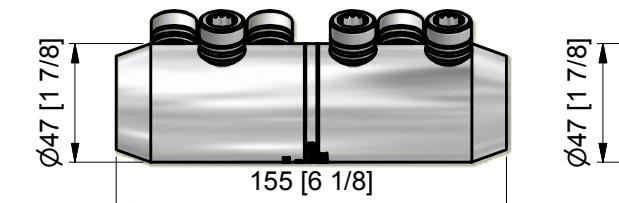
USMF2/RS (2/0 AWG-500 kcmil) 6187



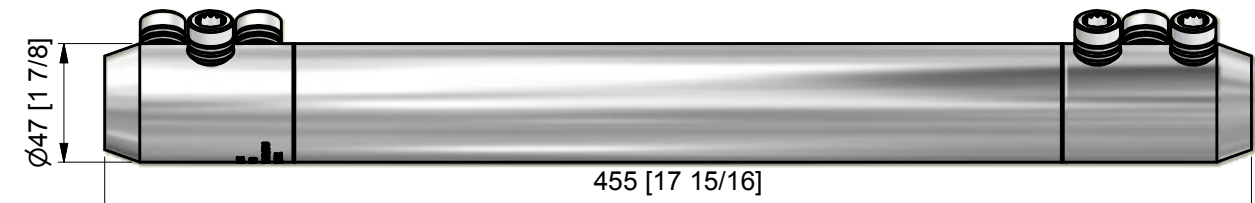
USMF5, USMF5-C
(#2 AWG-250 & 4/0-500 kcmil) 5812, 5847



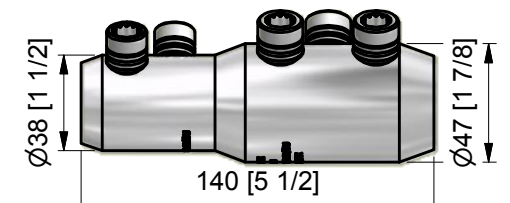
LVML/2-2H (4/0 AWG-500 kcmil) 5991



USMF3, USMF3-C (500-1000 kcmil) 5674, 5680



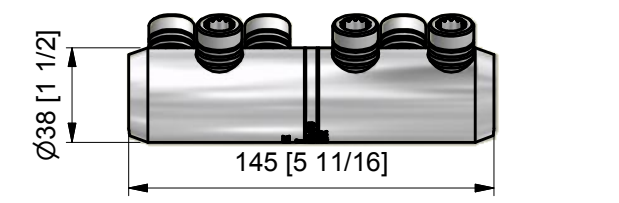
USMF3/RS (500-1000 kcmil) 6183



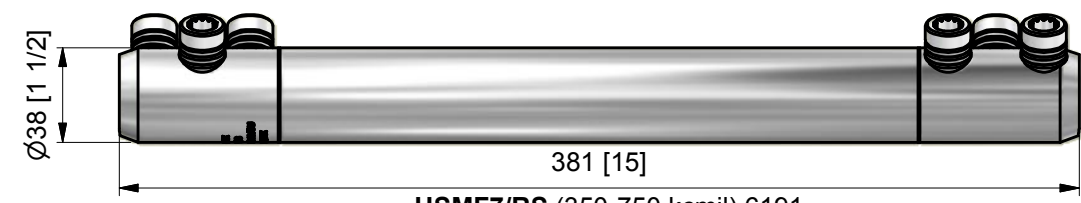
USMF4, USMF4-C
(1/0 AWG-500 & 500-1000 kcmil) 5810, 5845



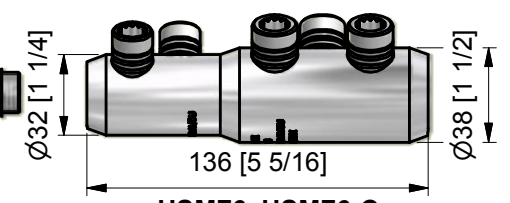
LVML/3-2H (500-1000 kcmil) 5864



USMF7 (350-750 kcmil) 5977



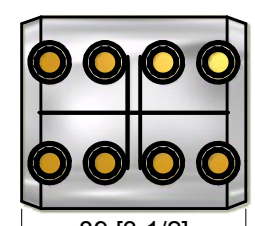
USMF7/RS (350-750 kcmil) 6191



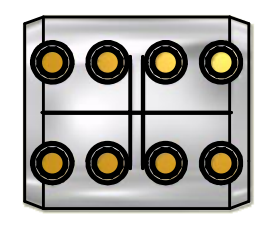
USMF6, USMF6-C
(4/0 AWG-350 & 350-750 kcmil) 5851, 5849



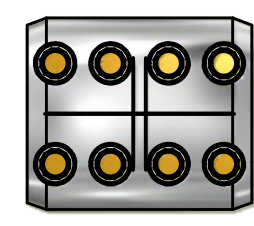
LVML/3A-2H (500-1000 kcmil) 6243



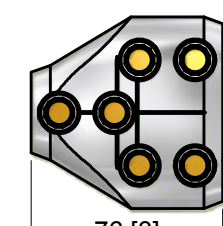
USMH/FPL-1, USMH/FPL-1-C
(4x#3 AWG-350 kcmil) 5814, 5826



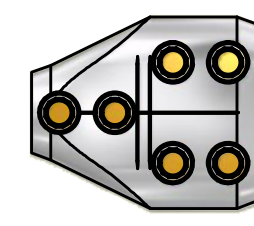
USMH/FPL-2, USMH/FPL-2-C
(2x350-750 kcmil, 2x#3 AWG-350 kcmil) 5816, 5828



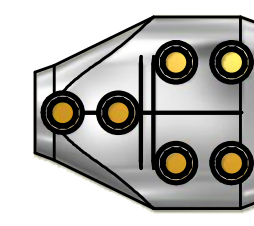
USMH/FPL-2A,
(3x350-750 kcmil, 1x#3 AWG-350 kcmil) 6388



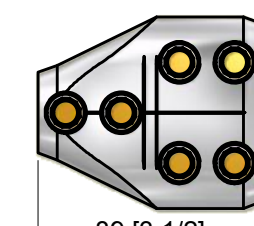
USMB/FPL, USMB/FPL-C
(3x#3 AWG-350 kcmil) 5682, 5741



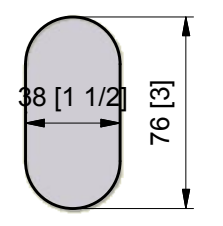
USMB/FPL-2, USMB/FPL-2-C
(2x350-750 kcmil, 1x#3 AWG-350 kcmil) 5760, 5762



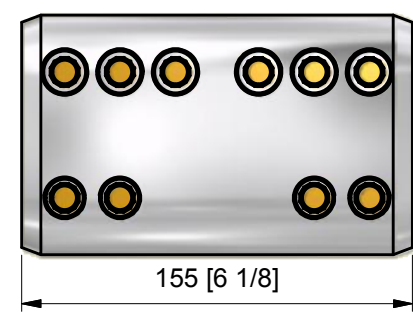
USMB/FPL-4
(3x2/0 AWG-500 kcmil) 6037



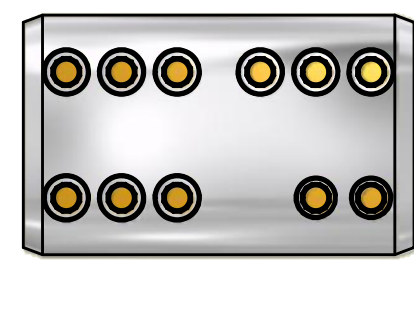
USMB/DE, USMB/DE-C
(3x350 kcmil-750 kcmil) 5736, 5739



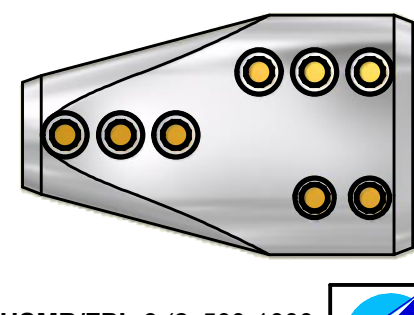
USMB5
(3x500-1000 kcmil,) 6309



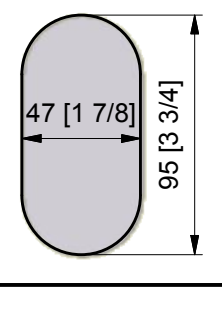
USMH/FPL-4
(2x500-1000 kcmil, 2x#3-350 kcmil) 5918



USMH/FPL-3
(3x500-1000 kcmil, 1x#3-4/0 AWG) 5912



USMB/FPL-3 (2x500-1000 kcmil, 1x#3-350 kcmil) 5925



USMB5
(3x500-1000 kcmil,) 6309



JTS/22



JTS/11



JTS/9

M	SMHFPL2A	24.05.11
L	MB5L3ARS	21.02.11
K	2,750,2,350	20.04.10
J	USMBFPL4	07.04.10
H	LVML/1/2	16.02.10
G	USMBFPL3	22.09.09
F	16was11	19.08.09
E	2/0was4/0	30.06.09
D	LVML/3	30.04.09
C	USMF6	25.03.09
B	350kcmil	22.12.08
REV	TSC	DATE

This document is the copyright of S.E.D. Ltd. It shall not be reproduced, disclosed to third parties or used as the basis for manufacture or sale without the written permission of the owners.		MAT'L Aluminium/Copper	DIMENSIONS IN mm TOLERANCES UNLESS STATED 1 DECIMAL PLACE ± 0.25 mm 2 DECIMAL PLACES ± 0.05 mm ALL ANGLES ± 0°30'
DRN. P.W.	© DATE 03.11.08	SPEC.	
CHK.	DATE	FINISH Electro-Tin	REMOVE ALL SHARP EDGES THIRD ANGLE PROJECTION
APP.	DATE	LV/MV NORTH AMERICA PRODUCT RANGE	PR No. PR4792-74
USED ON	SCALE A3 1:3		DRG. No.
S.E.D. Ltd. HOLMFIRTH, HUDDERSFIELD, ENGLAND			ISSUE M SHEET 1 OF 1