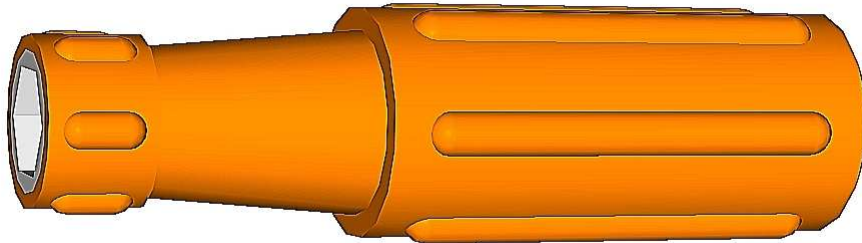


‘JTS/21’ Insulated ‘Nut Runner’

Material: Nylon II (Handle)

Specification: IEC 60900 : 2004 (1000V)

Length: 116mm

The **JTS/21 Insulated Nut Runner** is designed as jointing aid and has an insulated handle for the torque tightening of steel 13mm A/F nuts.

The jointing tool can be used as an aid during the assembly of the ‘LVS’, ‘LVMS’ or ‘LVM’ range of product by way of holding the M8 steel nuts captive utilising the ‘magnetic’ socket.

©COPYRIGHT

Sicame Electrical Developments Ltd operates a continuous product design development and improvement programme and offers active co-operation establishing satisfactory procedures and systems to meet new or unusual jointing situations. The company reserves the right to introduce modifications to the above designs and specifications without prior notice.