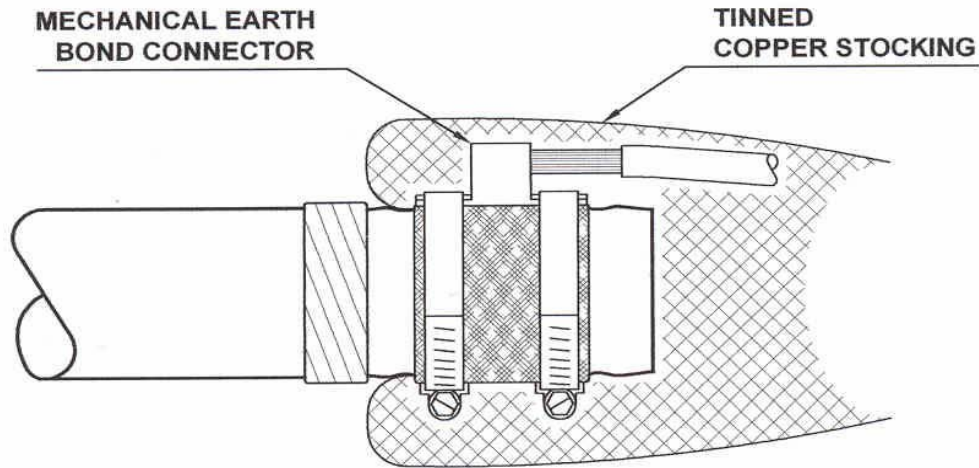


MEHV PICAS Connector Kit



Principle Application

Mechanical earth connection to EATS 09-12 11KV impregnated paper insulated aluminium sheathed cable (PICAS).

Range

Connector Reference	Core csa (mm ²)			
	Service/Mains		Earth Bond	
	Min	Max	Min	Max
MEHV3	50	95	10*	70
MEHV4	120	300	10*	70

Note: For jointing other core configurations/sizes please contact Sicame Technical Dept

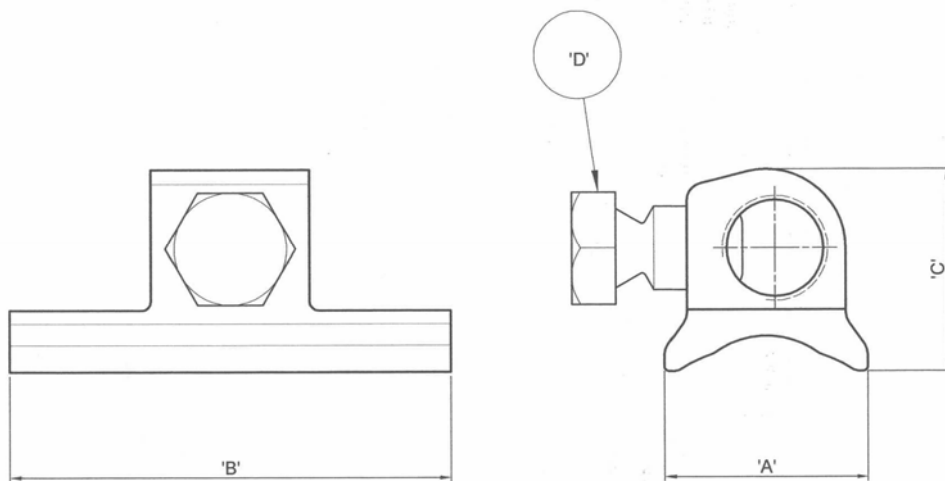
The **Hepworth MEHV** range of kits provide the end user with a quick and reliable connection onto the aluminium sheath of a range of PICAS cables.

The profiled copper alloy 'saddle' sits firmly on the aluminium sheath, using knitted wire tape and the tinned copper stocking as the interface, with the assembly held firmly in place using stainless steel worm drive clips.

The end user can now position, cut to length and prepare the earth bond BEFORE the final torque controlled connection is made within the connector.

* When jointing 10mm² earth bond, 'double up' conductor core before inserting within the cable port.

MEHV PICAS Connector Kit



Kit Reference	Dimensions (mm)			
	A	B	C	D
MEHV3	23	50	16	13 A/F
MEHV4	32.5	53	16	13 A/F

Material

Copper Alloy (Body/Screw)

Test Specification

Designed to meet the requirements of Engineering Recommendation C93.