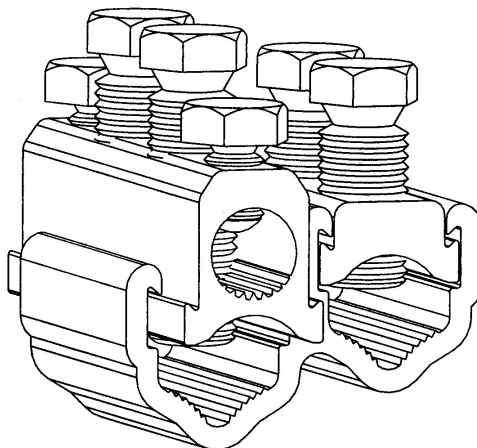


**WB95/S, WB185/S, WB300/S
Connectors****Principle Application**

For LV mains branch jointing (with services) of sector/round, stranded/solid, aluminium/copper conductor cores.

Range

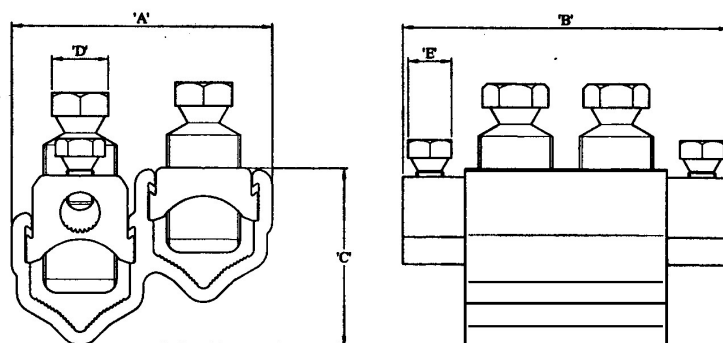
Connector Ref <i>(Part Number)</i>	Core csa mm ² (In ²)						Approx Unit Weight (gms)
	Mains		Branch		Service		
	Min	Max	Min	Max	Min	Max	
WB95/S <i>(51604-31)</i>	25 (0.04)	95 (0.15)	25 (0.04)	95 (0.15)	10*	70	235
WB185/S	35 (0.06)	185 (0.3)	50 (0.06)	185 (0.3)	10*	70	425
WB300/S	70 (0.1)	300 (0.5)	70 (0.1)	300 (0.5)	10*	70	605

Note: For jointing other core configurations/sizes please contact Sicame Engineering Department.

The **Sicame WB95/S** range of mains branch connectors accommodates an extensive range of LV mains cable cores whilst providing the facility for upto 2 service connections.

The connector utilises the proven shear head, direct acting bolts (plated) thereby removing the need for pressure plates.

The plated bolts, combined with a standard plated yoke section, allow for the jointing of mains copper conductor cores without the need for conventional brass gauze.

**WB95/S, WB185/S, WB300/S
Connectors****Physical Dimensions**

Connector Ref (Part Number)	Dimensions (mm)				
	A	B	C	D	E
WB95/S (51604-31)	50.0	79.0	36.5	13 A/F	13 A/F
WB185/S	67.0	90.0	44.5	17 A/F	13 A/F
WB300/S	78.0	98.0	53.0	17 A/F	13 A/F

Material

Aluminium Alloy, Copper Alloy (Service Shear Screw)

Test Specification

Designed to meet the requirements of Engineering Recommendation C79 and IEC 1238-1.

Stranded service conductor less than 10mm² should be doubled and re-doubled, where necessary, to achieve a satisfactory cross section area.