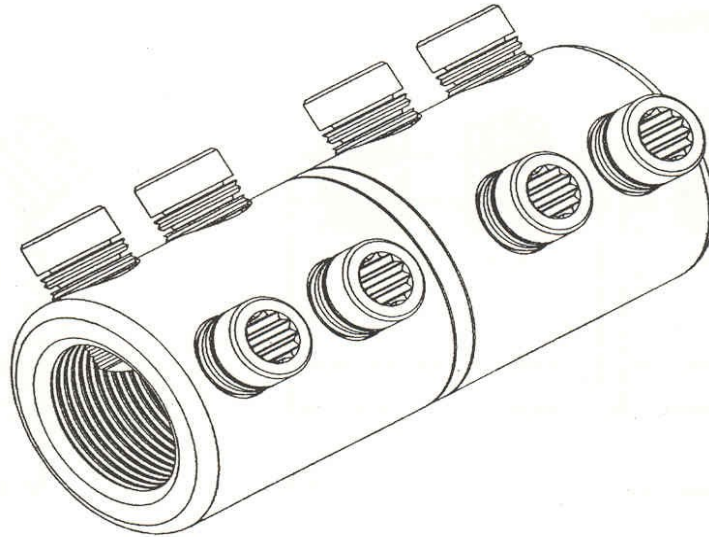


Straight-through  
mechanical ferrule with  
moisture / contaminant  
block

## MECHANICAL CONNECTORS

### MF9 Connector



### Principle Application

Straight jointing of solidal/stranded, aluminium/copper circular conductor cores.

### Range

Product Reference	Core c.s.a. (mm <sup>2</sup> )	
	Min	Max
MF9	480 (4 x 120)	600 (4 x 150)

Note: For jointing other core configurations/sizes please contact Sicame Technical Dept

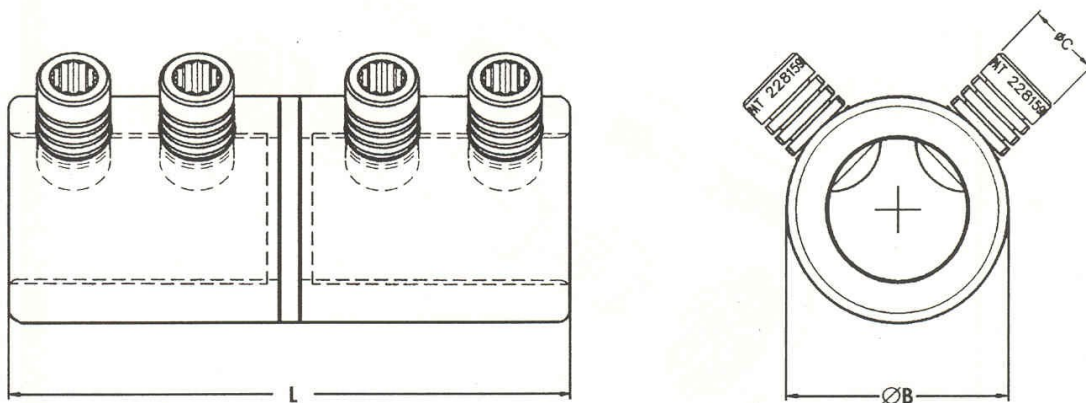
The **Sicame MF9** mechanical ferrule is manufactured from solid aluminium alloy bar, thereby providing an integral moisture/contaminant block. The ferrules also utilise the patented 'universal' range taking shear bolts.

Straight-through  
mechanical ferrule with  
moisture / contaminant  
block

## MECHANICAL CONNECTORS

### MF9 Connector

#### Physical Dimensions



Product Reference	Dimensions (mm)		
	L	ØB	ØC
MF9	120	50	18

#### Material

Aluminium Alloy

#### Fitting instructions

1. Strip insulation from each core equal to the depth of the bore guide + 5mm.
2. Thoroughly abrade exposed conductor cores. (See note)
3. Position the conductor cores within the connector ensuring they are fully located.
4. Fit the universal shear bolts and tighten consecutively one turn at a time until the bolts have sheared.

#### Note

When jointing copper conductor wrap the supplied brass gauze around the core prior to installation.