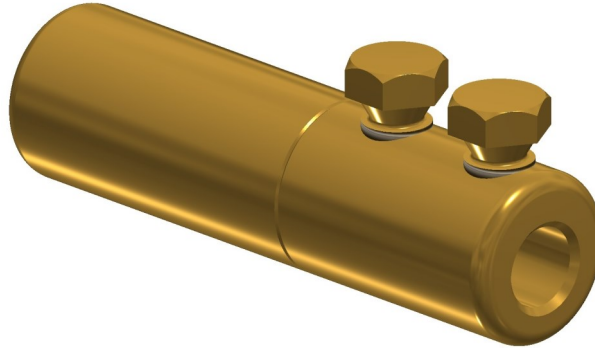


Mechanical termination with  
moisture / contaminant block  
for medium voltage  
applications

## MECHANICAL CONNECTORS

### TI Brass Thimble



### Principle Application:

Termination of solid circular cored conductors.

### Range

Connector Reference	Core C.S.A. (mm <sup>2</sup> )
	Solid
TI	95

\*Conductor cores 10mm<sup>2</sup> and below should be doubled to achieve the necessary cross sectional area.

The TI mechanical thimble incorporates an integral moisture block and comes complete with core stripping guides.

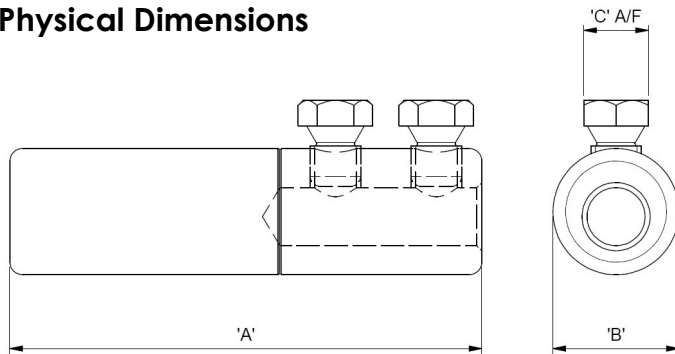
Suitable for all cable voltages up to and including 11000 volts.

Mechanical termination lug  
with moisture / contaminant  
block for medium voltage  
applications

## MECHANICAL CONNECTORS

### TI Brass Thimble

#### Physical Dimensions



Connector Reference	Dimensions (mm)		
	'A'	Ø'B'	'C' A/F
TI	93.5	25	13

#### Material:

Brass

#### Fitting instructions:

1. Strip insulation from the core equal to the depth of the bore guide + 5mm.
2. Thoroughly abrade exposed conductor core. (See note).
3. Fully insert the cable core into connector body.
4. Tighten the shear bolts consecutively one turn at a time until all the heads have sheared.

**Note:** When jointing copper conductor, wrap the supplied brass gauze around the core prior to installation.

**Important:** Please note that when using the 'TI' Terminations in joints normally rated in excess of 3.3KV, it is essential that the Jointing System Supplier's instructions for stress relieving and re-insulation techniques are strictly adhered to.