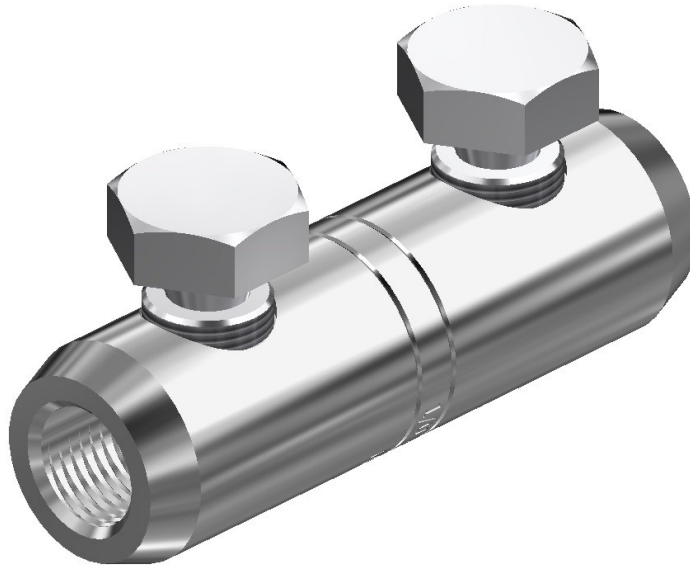


'MF24' Aluminium In-Line Splice



Principle Application:

Straight jointing of circular stranded aluminium or copper conductors on medium voltage applications.

Range:

Connector Reference	Stranded Core Size	
	Min	Max
MF24	#3 (27mm ²)	4/0 (107mm ²)

The '**MF24**' mechanical splice incorporates an integral moisture/contaminant block and utilises the multi shear point, hexagon head shear bolts.

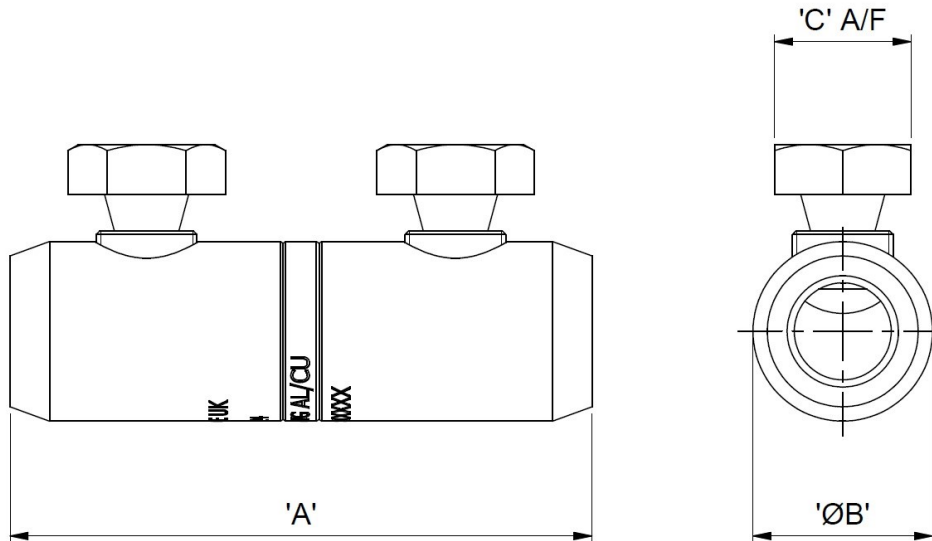
The shear bolts are designed to shear flush with the connector body when using a standard 3/4" AF socket thereby ensuring a smooth connector profile.

**Mechanical In-Line Splice with
Moisture/Contaminant Block for
Medium Voltage Applications**

**MECHANICAL
CONNECTORS**

'MF24' Aluminium In-Line Splice

Physical Dimensions:



Connector Reference	Dimensions		
	'A'	'ØB'	'C' A/F
MF24	3.19" (81mm)	0.98" (25mm)	3/4" (19mm)

Material: Aluminium Alloy (Electro-Tinned)

Test Specification: ANSI C119

Test Report N°:

Fitting Instructions:

1. Strip the insulation from each core equal to the depth of the bore.
2. Wire brush the exposed conductor cores and wipe clean.
3. Align and position the conductor cores in each of the bores ensuring that the core is fully inserted to the centre wall.
4. Torque tighten the shear bolts until the bolts have sheared.