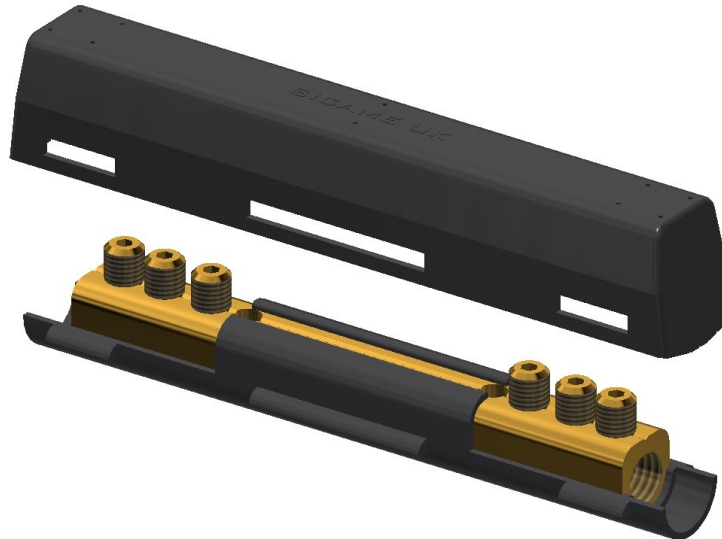


**MF4/38XL/SHR Connector**



**Principle Application:**

Stranded and solid shaped service conductors.

**Range:**

Product Reference (Part Number)	Type	Core C.S.A. (mm <sup>2</sup> )	
		Min	Max
MF4/38XL/SHR (51803-40)	Moisture Blocked	16	70

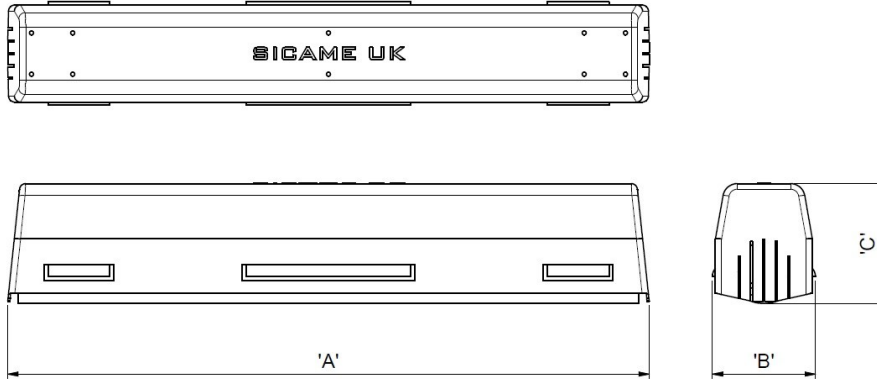
Note: For jointing other core configurations/sizes please contact Sicame Engineering Dept

The **Sicame MF4/38XL/SHR** mechanical connector is designed for straight connections on stranded, solid, circular or sector shaped service conductor cores.

It comes complete with a factory fitted lower polypropylene shroud and 'snap on' upper shroud thereby providing a fully insulated connector assembly.

**MF4/38XL/SHR Connector**

**Physical Dimensions:**



Product Reference (Part Number)	Dimensions (mm)		
	'A'	'B'	'C'
MF4/38XL/SHR (51803-40)	155.5	25.0	29.0

**Secondary Application:**

Stranded and solid circular conductors.

**Range:**

Product Reference (Part Number)	Type	Maximum Core C.S.A. (mm <sup>2</sup> )	
		Solid	Stranded
MF4/38XL/SHR (51803-40)	Moisture Blocked	95	70

- Note: Conductors below 6mm<sup>2</sup> should be doubled and, if necessary, doubled again to achieve a satisfactory cross sectional area.

**Material:**

Copper Alloy

**Test Specifications:**

BS4579: Pt 1: 1970, BS4579: Pt 3: 1976

- Cut the service cables to length and strip the core insulation equal to half the length of connector + 3mm.
- Thoroughly abrade all conductors to be jointed.
- Align cores within connector and tighten screws on each side of the connector consecutively, until tight using a 3mm AF tightening tool.