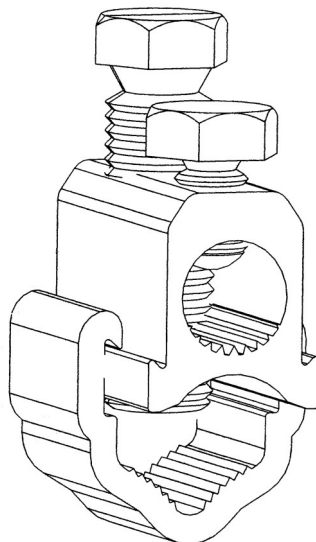


Mains service connectors  
single service

## MECHANICAL CONNECTORS

### UMS95/S, UMS185/S & UMS300/S Connectors



#### Principle Application

For LV mains service jointing of sector/round, stranded/solid, aluminium/copper conductor cores.

#### Range

Connector Ref (Part Number)	Mains mm <sup>2</sup> (In <sup>2</sup> )		Service (mm <sup>2</sup> )		Approx Unit Weight (gms)
	Min	Max	Min	Max	
UMS95/S (51803-16)	25 (0.04)	95 (0.15)	10*	70	56
UMS185/S (51801-16)	35 (0.06)	185 (0.3)	10*	70	106
UMS300/S (51801-17)	70 (0.1)	300 (0.5)	10*	70	146

Note: For jointing other core configurations/sizes please contact Sicame Engineering Department.

The Sicame **UMS95/S** ..... range of mains service connectors accommodates an extensive range of LV mains cable style and sizes.

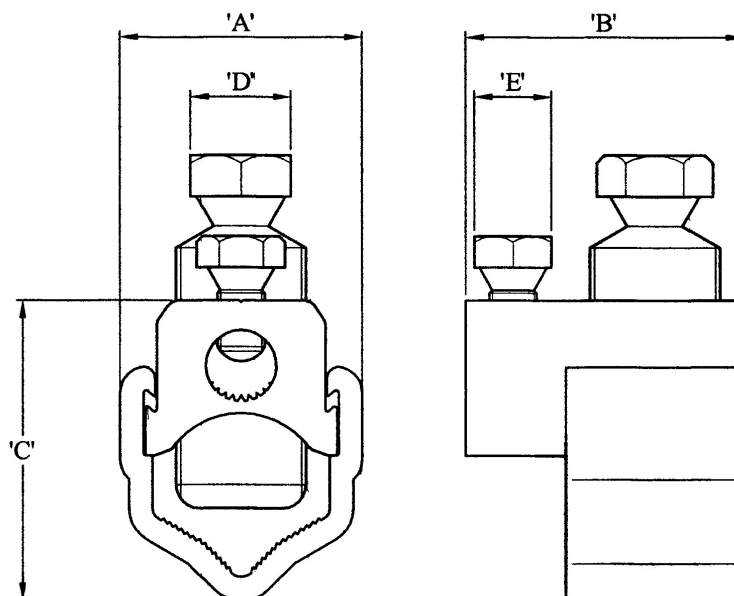
The connector utilises the proven shear head, direct acting bolts (plated) thereby removing the need for pressure plates.

The plated bolts, combined with a standard plated yoke section, allow for the jointing of mains copper conductor cores without the need for conventional brass gauze.

**Note:** For the jointing of CNE strands add the suffix 'N' to the end of the product code, pressure pads will then be included.

**UMS95/S, UMS185/S & UMS300/S  
Connectors**

**Physical Dimensions**



Connector Ref (Part Number)	Dimensions (mm)				
	A	B	C	D	E
UMS95/S (51803-16)	26.0	40.0	36.5	13 A/F	13 A/F
UMS185/S (51801-16)	35.0	46.0	44.5	17 A/F	13 A/F
UMS300/S (51801-17)	41.0	49.0	51.0	17 A/F	13 A/F

**Material**

Aluminium Alloy

Copper Alloy (Service Shear Screw)

**Test Specification**

Designed to meet the requirements of Engineering Recommendation C79 and IEC 1238-1.

Note: Stranded service conductor less than 10mm<sup>2</sup> should be doubled and re-doubled, where necessary, to achieve a satisfactory cross section area.