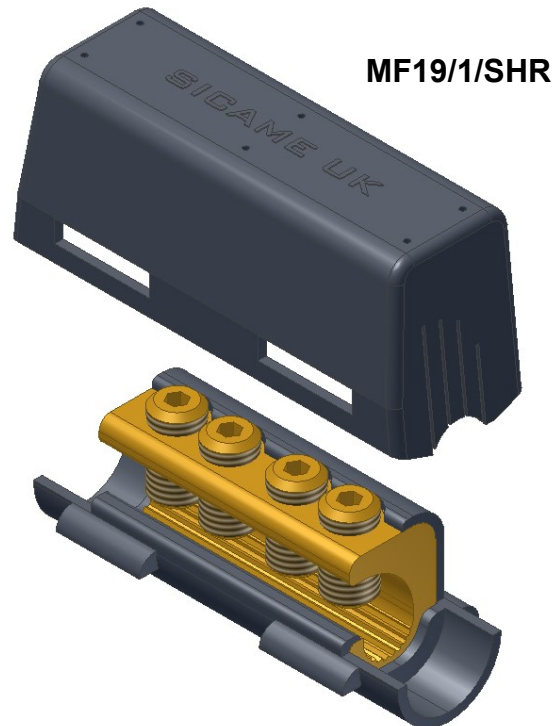
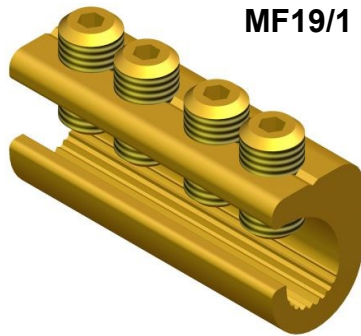


**MF19/1 & MF19/1/SHR Connector**



**Principle Application:**

Stranded and solid circular conductors.

**Range:**

Product Reference (Part Number)	Type	Core C.S.A. (mm <sup>2</sup> )	
		Min	Max
MF19/1 & MF19/1/SHR (51810-02) (51801-43)	Straight Through	4*	35

Note: For jointing other core configurations/sizes please contact Sicame Engineering Dept

The **Sicame MF19/1** mechanical connector is designed for straight connections on stranded or solid cable. The ferrules are manufactured in brass for suitability of jointing both copper and aluminium conductor cores.

The **Sicame MF19/1/SHR** mechanical connector has a factory fitted lower polypropylene shroud with a 'snap on' upper to fully insulate the assembled connector.

**Secondary Application:**

Stranded and solid shaped conductors.

Product Reference (Part Number)	Type	Core C.S.A. (mm <sup>2</sup> )	
		Min	Max
MF19/1 & MF19/1/SHR (51810-02) (51801-43)	Straight Through	4*	35

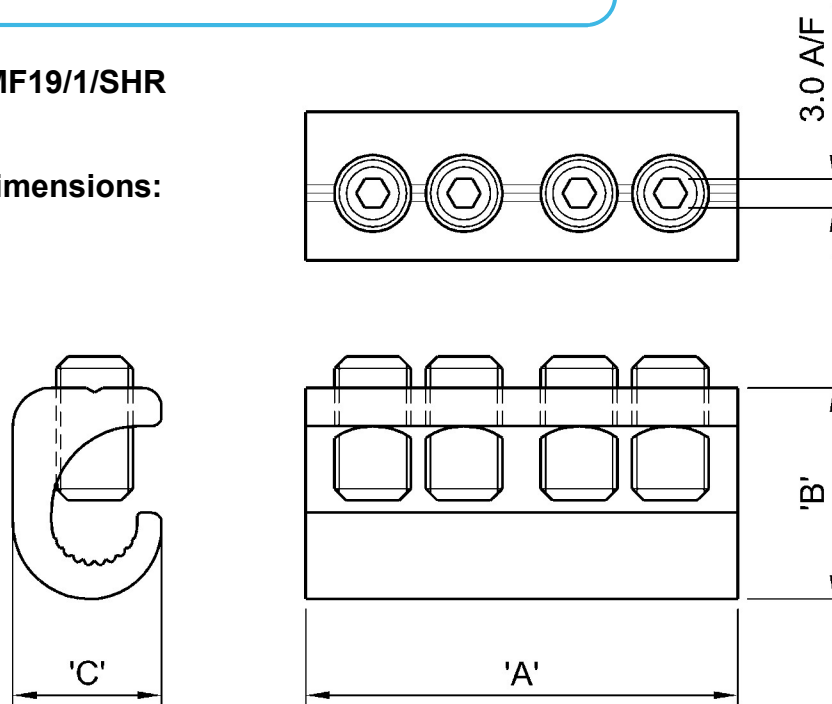
Note: For jointing other core configurations/sizes please contact Sicame Engineering Dept

Service Straight -  
Side Entry

## MECHANICAL CONNECTORS

### MF19/1 & MF19/1/SHR Connector

#### Physical Dimensions:



Connector Reference (Part Number)	Dimensions (mm)		
	'A'	'B'	'C'
MF19/1 & MF19/1/SHR (51810-02) (51801-43)	45.0	22.0	15.5

#### Material:

**Body:** Copper Alloy (MF19/1 & MF19/1/SHR)

**Shroud:** Polypropylene

#### Test Specification:

IEC1238-1: Test Reports TTR/257, 266 and 277

#### Fitting Instructions:

1. Cut the cables to length and strip the core insulation equal to half the length of the connector +3mm.
2. Thoroughly abrade all conductors to be jointed.
3. Align cores within connector and tighten screws on each side of the connector consecutively, until tight.