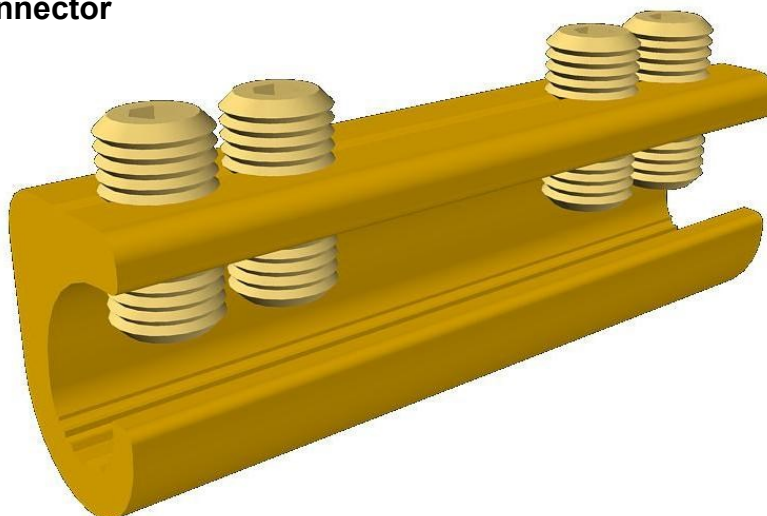


MF19/1 XL Connector



Principle Application:

Stranded and solid circular conductors.

Range:

Product Reference (Part Number)	Type	Core c.s.a. (mm ²)	
		Min	Max
MF19/1 XL (51810-02)	Straight Through	4*	35

Note: For jointing other core configurations/sizes please contact Sicame Engineering Dept

The **Sicame MF19/1** mechanical connector is designed for straight connections on stranded or solid cable. The ferrules are manufactured in brass for suitability of jointing both copper and aluminium conductor cores.

Secondary Application:

Stranded and solid shaped conductors.

Product Reference (Part Number)	Type	Core c.s.a. (mm ²)	
		Min	Max
MF19/1 XL (51810-02)	Straight Through	4*	35

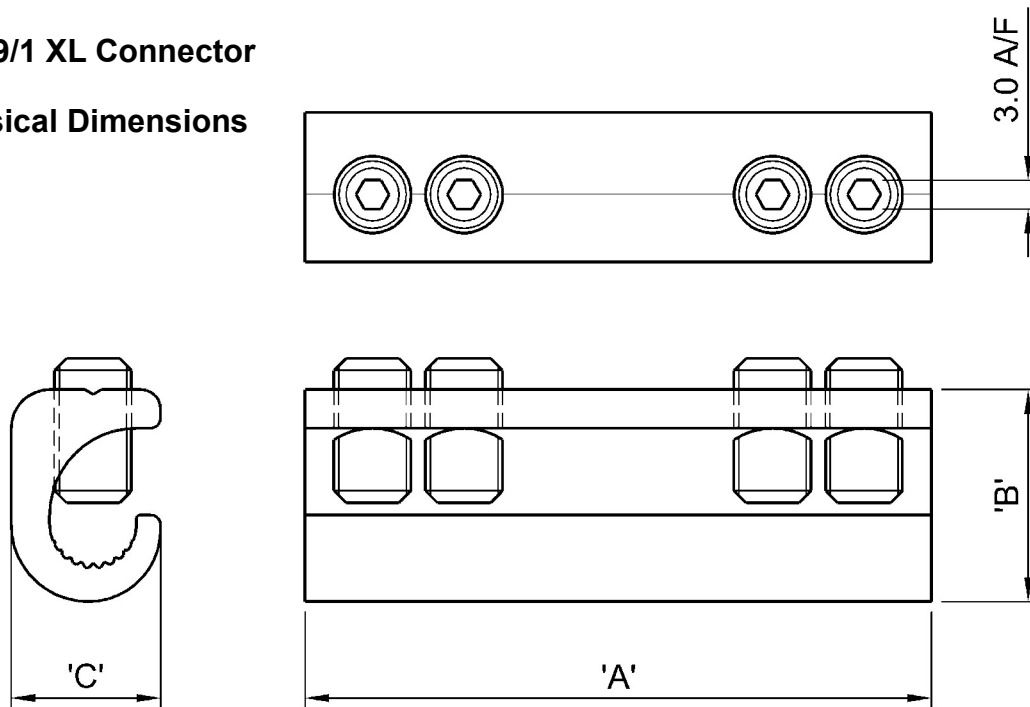
Note: For jointing other core configurations/sizes please contact Sicame Engineering

Service Straight -
Side Entry

MECHANICAL CONNECTORS

MF19/1 XL Connector

Physical Dimensions



Connector Reference (Part Number)	Dimensions (mm)		
	'A'	'B'	'C'
MF19/1 XL (51810-02)	65.0	22.0	15.5

Material:

Copper Alloy

Test Specification:

IEC1238-1: Test Reports TTR/257, 266 and 277

Fitting Instructions:

1. Cut the cables to length and strip the core insulation equal to half the length of the connector +3mm.
2. Thoroughly abrade all conductors to be jointed.
3. Align cores within connector and tighten screws on each side of the connector consecutively, until tight.

Note:

*Conductor cores 4mm² and below should be doubled, and if necessary doubled again, to achieve the necessary cross-sectional area.